



Camp Excel and More

Camp Excel is a specialized week long summer day camp that focuses on social and life skills for children ages 6 to 12.

The program consists of small group activities giving each child personal attention with a trained therapist. The program uniquely combines behavioral methods, group education, recreational activities, art, music and field trips to assist each child in developing new skills.

Parents have observed improvements in attitude, self-image, attention and behavior.

We know the kids will
EXCErate at EXCEL

Physical Conditioning

Camp Excel offers an exercise program and physical activities to focus on building a healthy physical body.

Daily Exercise Group

Weekly Healthy Eating Group

Swimming



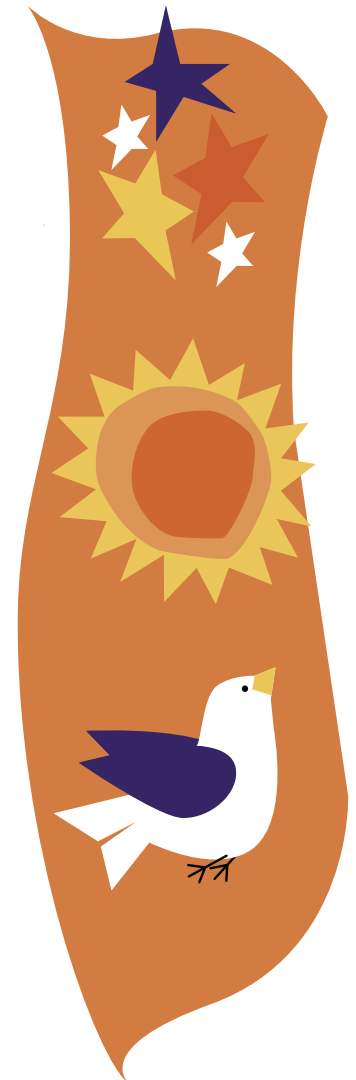
Center for Mental Health and Chemical Dependency Care

We Believe in People

Where is Camp Excel?

The Excel Center of Fort Worth
1220 West Presidio Street
Fort Worth, Texas 76102
817-335-6429
www.excelcenterfortworth.com

Camp Excel



Where kids love to
come and parents
feel welcomed!



Camp Excel

Challenging curriculum designed to teach your child life skills such as:

- Anger Management
- Learning to maintain attention
- How to make better choices
- How to communicate needs and feelings
- How to focus
- Increasing self-esteem
- Relaxation techniques
- Organizational Skills
- Interacting

Activities Include:

Social Skills Training
Daily Goal Setting
The Discovery Group
Field Trips, Music,
Arts and Crafts
Physical Conditioning
Snacks

When is Camp Excel 2010?

Dates

June 14 - 18	June 21 - 25
June 21 - 25	June 28 - July 2
July 6 - 9	July 12 - 16
July 19 - 23	July 26 - 30
August 2 - 6	August 9 - 13
August 16 - 20	

The camp will be closed July 4th & July 5th
in observance of the Independence Day Holiday

Time:

9:00 am - 1:30 pm
Monday through Friday

What is the Cost?

\$300.00 / weekly session

Transportation is available at a
minimal cost of \$10/day.

Who Can Participate?

Any child between the ages of 6 & 12
who is in need of increased social and
life skills training. The children learn
while having a blast!



How do I enroll?

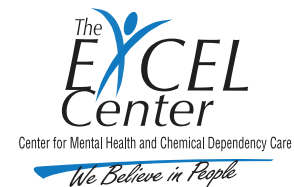
To receive an enrollment application
and consent form, please call:
817-335-6429
Reserve your spot EARLY!

Camp Excel Staff Highlights

The Camp Excel Staff include professionals with a Bachelors in Psychology, Masters in Social Work, a registered Nurse and program specialists. All staff are dedicated to child related careers. All staff are prescreened prior to employment.

**Campers should bring a
sack lunch each day!**

**Parent referrals are
available upon request**



1220 West Presidio Street
Fort Worth, Texas 76102
817-335-6429
www.excelcenterfortworth.com